

MIZUMI

DIGITAL SPORTS CENTRE

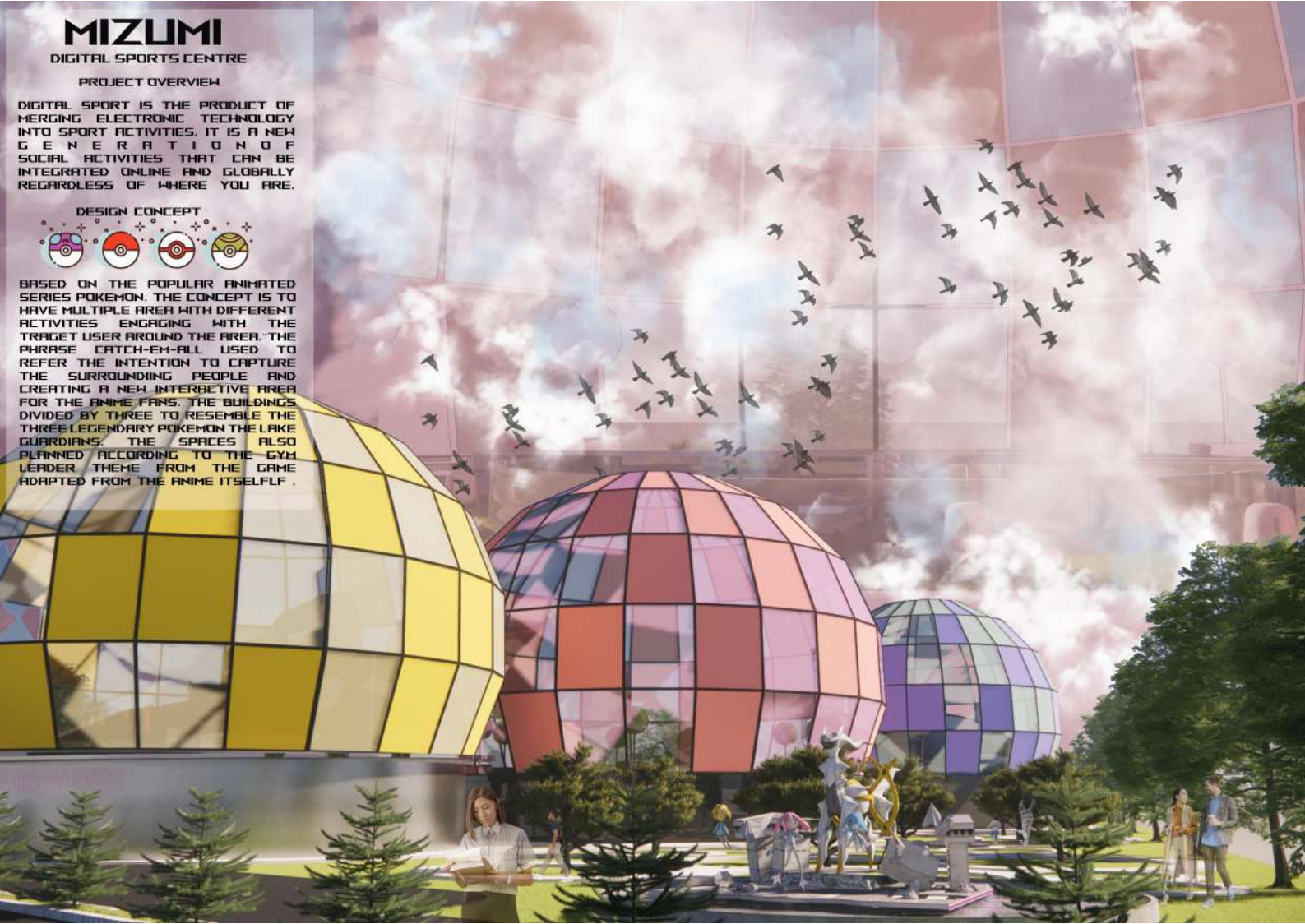
PROJECT OVERVIEW

DIGITAL SPORT IS THE PRODUCT OF MERGING ELECTRONIC TECHNOLOGY INTO SPORT ACTIVITIES. IT IS A NEW GENERATION OF SOCIAL ACTIVITIES THAT CAN BE INTEGRATED ONLINE AND GLOBALLY REGARDLESS OF WHERE YOU ARE.

DESIGN CONCEPT



BASED ON THE POPULAR ANIMATED SERIES POKEMON, THE CONCEPT IS TO HAVE MULTIPLE AREA WITH DIFFERENT ACTIVITIES ENGAGING WITH THE TRAGET USER AROUND THE AREA. THE PHRASE CATCH-EM-ALL USED TO REFER THE INTENTION TO CAPTURE THE SURROUNDING PEOPLE AND CREATING A NEW INTERACTIVE AREA FOR THE ANIME FANS. THE BUILDINGS DIVIDED BY THREE TO RESEMBLE THE THREE LEGENDARY POKEMON THE LAKE GUARDIANS. THE SPACES ALSO PLANNED ACCORDING TO THE GYM LEADER THEME FROM THE GAME ADAPTED FROM THE ANIME ITSELF.



**EXPLODED AXONOMETRIC
WITH MATERIALS**
SCALE 1:500

