

POROSITY, PERMEABILITY AND MICROSTRUCTURE OF FOAMED CONCRETE THROUGH SEM IMAGES

P. Shawnim¹ and F. Mohammad²

^{1,2} School of Architecture, Design and the Built Environment, Nottingham Trent University, Burton Street, Nottingham, NG1 4BU, UK.

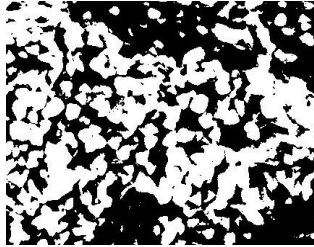
Date received: 12/10/2018, Date accepted: 14/02/2019

Corresponding author's email: paybar.shawnim2014@my.ntu.ac.uk and fouad.mohammad@ntu.ac.uk

<https://doi.org/10.33736/jcest.1434.2019>

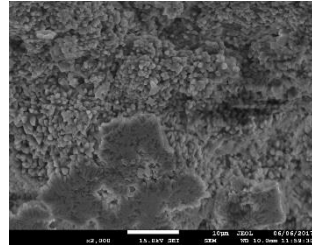
SUPPLEMENTARY

Back Scattered images (BS)

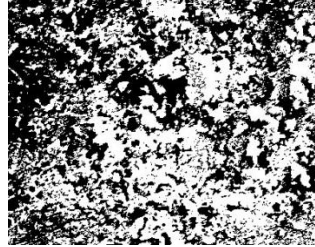


S3

SEM images at 2000X

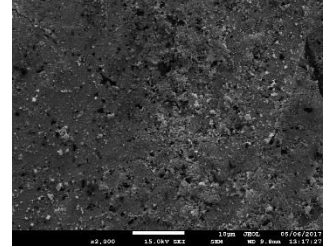


Back Scattered images (BS)

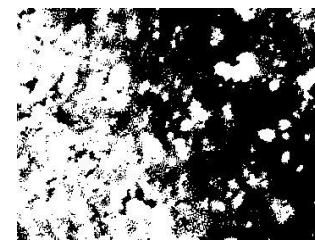


S4

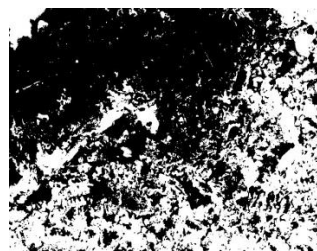
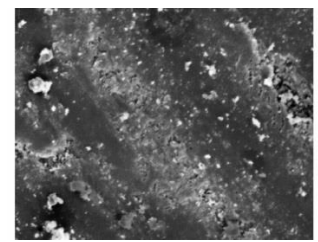
SEM images at 2000X



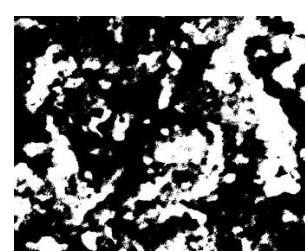
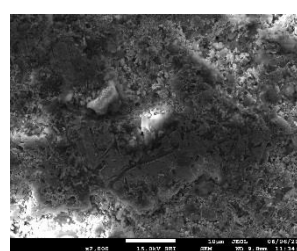
S5



S7



S8



S10

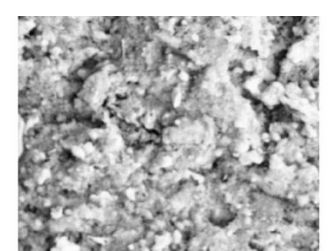


Figure 7 Backscattered (BS) and SEM images of the selective fifteen (S3 to S20) FC specimens investigated

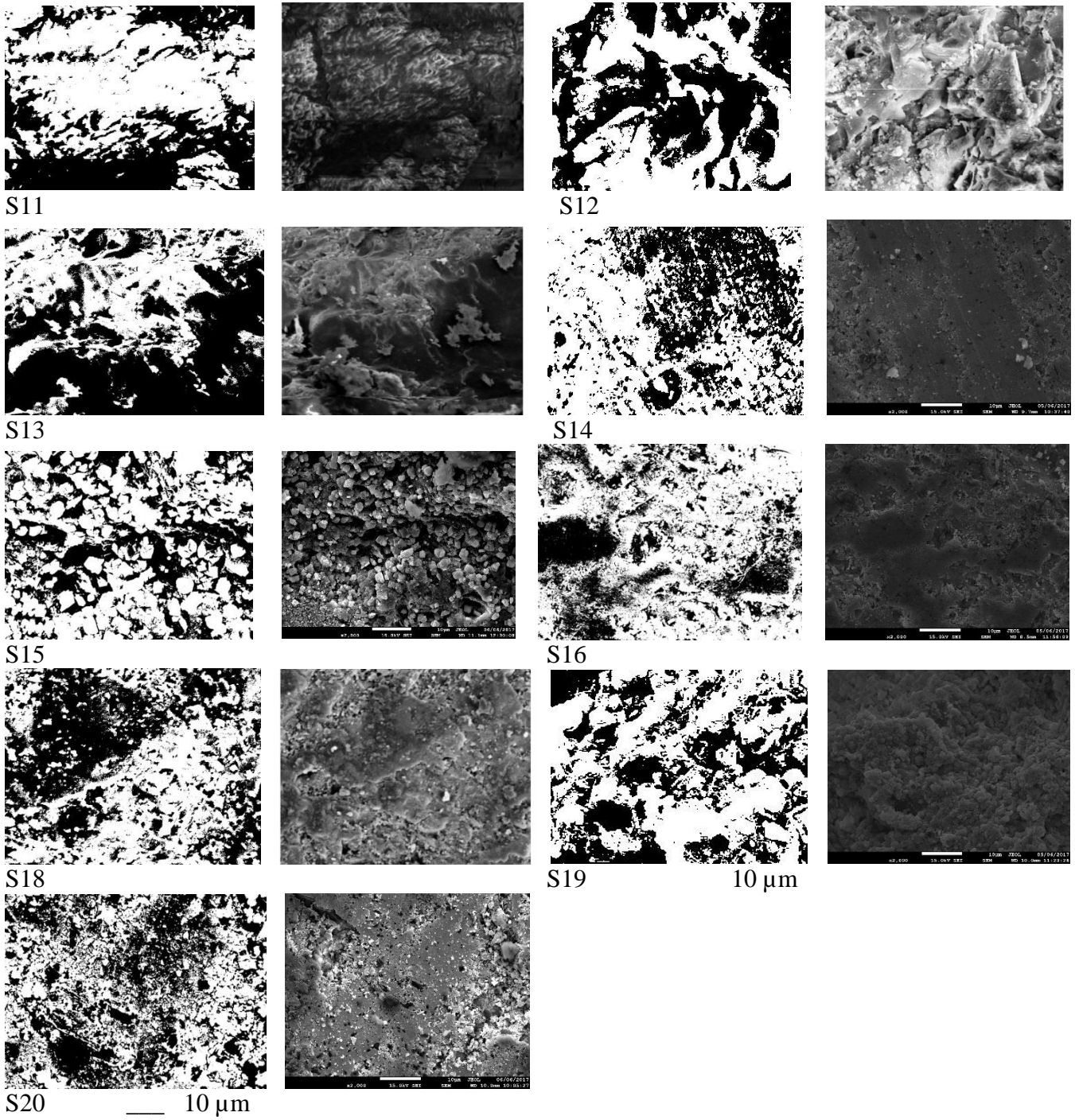


Figure 7 Backscattered (BS) and SEM images of the selective fifteen (S3 to S20) FC specimens investigated. (cont.)